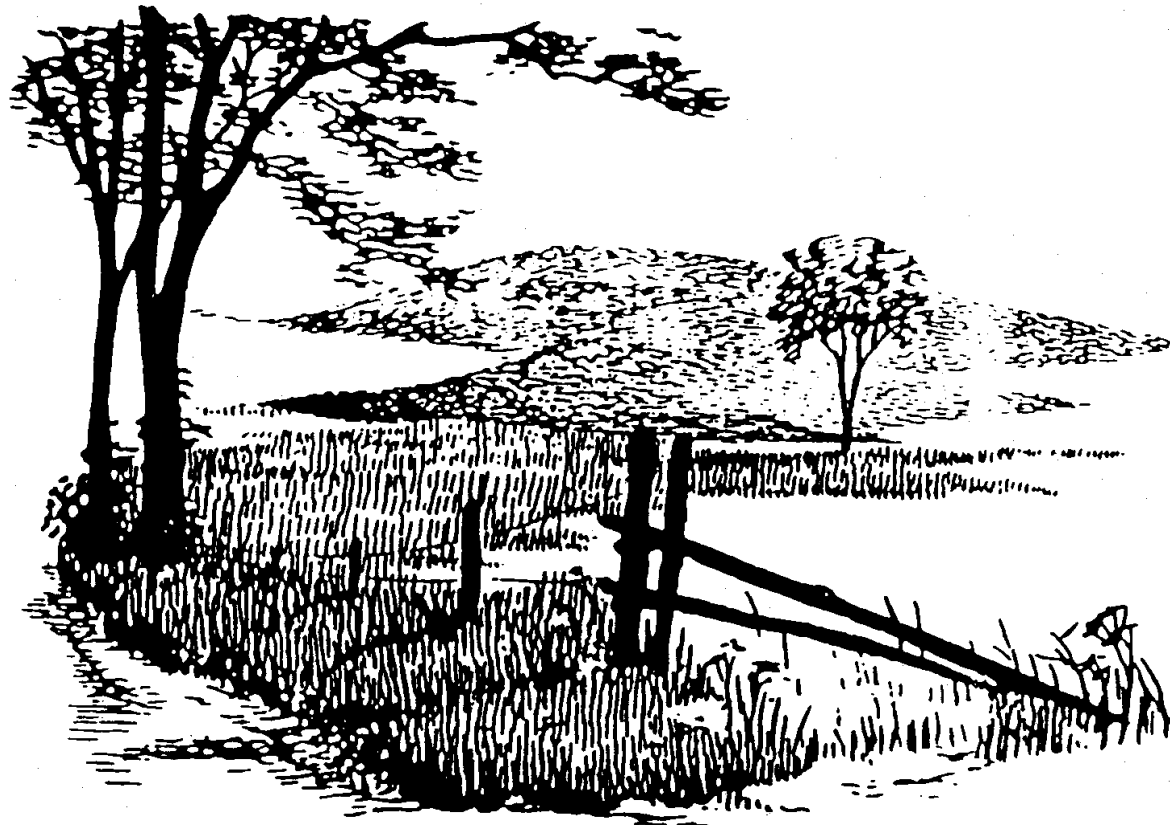


OUTDOOR AND ENVIRONMENTAL EDUCATION RESOURCE DIRECTORY



(revised May 2007)

OEE Share/resource directory/resdir-03-07

Animal programs/ Zoos

- Bronx Zoo
- LI Game Farm
- Party Pets
- Prospect Park Wildlife Center
- Queens Wildlife Center
- Serpetarium (Int'l Fauna Society)
- T.R Sanctuary
- Volunteers for Wildlife
- White Post Farms
- See also – “Visiting Experts”

Aquariums/ Marine Programs

- BOCES: north and south shore boats
- Atlantis Marine World
- Cold Spring Fish Hatchery
- Cornell Cooperative Extension / Vanderbilt Marine Program
- I Fish NY
- North Wind Undersea Institute
- NY Aquarium
- Riverhead Foundation for marine Research
- The Waterfront Center @ Oyster Bay

Botanical Gardens

- Clark Botanic Garden
- Japanese Stroll Garden
- NY Botanical Gardens
- Old Westbury Gardens
- Planting Fields Arboretum
- Queens Botanical Gardens

Curricular Programs

- BOCES – JASON Expeditions

Farms, Historical Centers

- BOCES Brookville site
- Colonial Farmhouse Restoration /Green Meadows Farm
- Cornell Cooperative Extension-Suffolk County Farm
- Cow Neck Peninsula Historical Society - Sands-Willet House Museum
- Deep Hollow Ranch
- Fort Salonga Farm
- Hoyt Farm
- Huntington Historical Society – Kissam House
- Joseph Lloyd Manor House
- Old Bethpage Village Restoration
- Oyster Bay Historical Society
- Queens County Farm Museum
- Raynham Hall
- Sagamore Hill
- Suffolk Cty Archeological Association

In-School Programs

- BOCES: Earth Balloon, Starlab, JBC
- Cornell Cooperative Extension
- LI Center for Arts and Sciences
- Mad Science
- Salamander Solutions
- See also “Visiting Experts”

Museums

- Amer. Merchant Marine Museum
- Amer. Museum of Natural History
- Brookhaven Nat'l Lab Science Museum
- Cradle of Aviation Museum
- Garvies Point Museum and Preserve

Museums (cont.)

- Goudreau Math Museum
- Gregory Museum
- Intrepid Sea & Air Space Museum
- Long Island Children’s Museum
- LI Museum of Amer. Art, History & Carriages (Stony Brook Museum)
- North Wind Undersea Institute
- Science Museum of LI
- Vanderbilt Museum
- Whaling Museum

Nature Centers /Preserves

- BOCES Brookville, Caumsett
- Alley Pond
- Caleb Smith State Park Preserve
- CSTL at Tanglewood Preserve
- Garvies Point Museum and Preserve
- JFK Wildlife Sanctuary
- Muttontown Preserve & Bill Patterson Nature Center
- Theo. Roosevelt Nature Ctr (Jones Beach)
- Theo. Roosevelt Sanctuary (Oyster Bay)
- Sands Point Park & Preserve
- Sweetbriar Nature Center
- Tackapausha Museum & Preserve

Planetariums

- BOCES - Starlab
- Hayden Planetarium/Rose Center
- Vanderbilt Planetarium

Off-site Locations w/BOCES staff

- BOCES-provides naturalists at any location
- Hecksher Park
- Fire Island, Robert Moses State Park
- Jones Beach
- TOBAY Beach
- Sunken Forest, Fire Island

Science Centers

- Buehler Science Center
- Dolan DNA Learning Center
- Liberty Science Center
- LI Center for Arts and Sciences
- NY Hall of Science

Site Tours

- American Re-Fuel

Visiting Experts (some of these vendors were previously listed with Arts in Education)

- Azban (Joseph Bruchac)
- Birds in their Habitat (Henry Lappen)
- Earth Expo Express
- International Fauna Society
- Mobile Ed Productions (science themed only)
- Party Pets
- Rainforest Exploration Research and Education (Steve Fratello “Butterfly Man”)

Overnight Resident Programs

Long Island

- BOCES – Caumsett (dormitory); Brookville (tenting)
- Boys and Girls Harbor (East Hampton)
- Camp DeWolfe (Wading River)
- Dorothy P. Flint (Riverhead)
- Quinipet (Shelter Island)

Upstate

- Ashokan Outdoor Environmental Center (Olivebridge, NY)
- Frost Valley YMCA Environmental Education Center (Claryville, NY)
- Greenkill YMCA Environmental Education Center (Huguenot, NY)

Connecticut

- Camp Jewell (North Colebrook, CT)

New Jersey

- Camp Mason (Blairstown, NJ)
- Fairview Lake Environmental Education Center (Stillwater, NJ)
- Mount Tone (Kenilworth, NJ)

Pennsylvania

- Pocono Environmental Education Center (Dingmans Ferry, PA)

If you do not see a vendor listed that you would like to be considered, please contact Outdoor Education at 516-396-2264

Nassau BOCES - Outdoor and Environmental Education
(revised December 2005)

SITE	HABITAT AND/OR FACILITIES	PROGRAM CONTENT
<p>Alley Pond Environmental Center 228-06 Northern Blvd. Douglaston, NY 11363-1890 (718) 229-4000 – Education Dept www.alleypond.com</p>	<p>Park in Queens consists of more than 600 acres of woodlands, meadows and fresh and salt water marshes.</p>	<p>Indoor orientation period, guided interpretive walk, pet live animals, nature craft project.</p>
<p>American Merchant Marine Museum US Merchant Marine Academy 300 Steamboat Road Kings Point, NY 11024 (516) 773-5515</p>	<p>The Museum is on the McNulty Campus of the US Merchant Marine Academy. Once the home of William S. Barstow, the building is a designated Historic House by the Society for the Preservation of L.I. Antiquities.</p>	<p>Students enjoy a guided tour through exhibits which emphasize the theme Ships Made America. Students participate in a hands-on activity regarding oil spills and water pollution and then pair up for an artifact scavenger hunt. Program is designed for 4th-5th graders.</p>
<p>American Museum of Natural History Central Park West at 79th St. New York, NY 10024 (212) 769-5200 (Call BOCES for special procedure)</p>	<p>Natural History Exhibits; school lunch room (reservations required); restaurant facilities; gift/museum shop</p>	<p>Four floors of exhibits plus Naturemax theater, Hayden Planetarium and Laser Shows.</p>
<p>American Ref-Fuel 600 Avenue C Westbury, NY 11590 (516) 683-5400 – Tour reservations</p>	<p>Waste-to-energy facility, control room, crane</p>	<p>Walking tour (approx. 1-1/2 hours) of site where non-recycled waste is used to generate electricity. Video and interactive discussion.</p>
<p>Aquarium for Wildlife Conservation (now New York Aquarium)</p>	<p>2500 animals in over 100 exhibits; cafeteria</p>	<p>Marine life exhibits, hands-on exhibits, lectures and tours.</p>
<p>Atlantis Explorer/Atlantis Marine World 431 East Main Street Riverhead, NY 11901 (631) 208-9200</p>	<p>Aquarium displays (year-round) and tour boat (open May through Oct.).</p>	<p>Aquarium displays include sea lion shows, sharks, seals, exotic fish in the "Amazon Rain Forest", submarine simulator ride, etc. Discover the ecological wonders of LI waterways aboard the interactive 2-hour tour boat adventure.</p>

SITE	HABITAT AND/OR FACILITIES	PROGRAM CONTENT
<p>Azban Inc C/o James Bruchac 23 Middle Grove Road Greenfield Center, NY 12833 (518) 583-9980 www.ndakinna.com</p>	<p>Programs done in the schools.</p>	<p>During large or individual classroom question/answer sessions the author explains what it is like to be an author, relating growing up hearing Native legends from his father Joseph Bruchac to his real life experiences in the wilderness. Often bringing with him various casts he has made of animal tracks he has captured in the wild from wolves to grizzly bears.</p>
<p>Birds in Their Habitat Henry Lappen 120 Pulpit Hill #31 Amherst, MA 01002 413-549-3722 email: wow@henrylappen.com http://henrylappen.com</p>	<p>Classroom based program</p>	<p>A hands-on presentation using Henry Lappen's masks to explore bird biology and adaptation. Students learn to appreciate the natural diversity of the avian world. Covers many aspects of bird life and a wide variety of species. A curriculum guide is available.</p>
<p>BOCES Environmental Ed. Center at Brookville 193 Brookville Road Brookville, NY 11545 (516) 626-1420 (site) (516) 396-2264 (info & bookings)</p>	<p>Woods, log cabin, blacksmith shop, classroom building. Complete Project Adventure Course available.</p>	<p>The Homestead Ecology Program at Brookville reproduces the way of life of the early settlers. It became necessary for the settlers to carve out an existence from their own immediate environment. In that regard, the program endeavors to investigate the ways in which the early Americans abused or enhanced their environment in the normal course of existing from day to day. Programs such as project adventure, blacksmithing, broommaking, candlemaking, corn husk dolls, and organic gardening are offered. Overnight tenting and day programs are available. Call for more details.</p>
<p>BOCES Environmental Ed. Center at Caumsett State Historic Park 29 Lloyd Harbor Road Huntington, NY 11743 (631) 549-0071 (site) (516) 396-2264 (info & bookings)</p>	<p>1600 acres. Fields, woods, seashore, pond, salt marsh, Project Adventure course, year-round building which includes dormitory rooms, dining room, classrooms.</p>	<p>The day and resident programs emphasize contrast and comparison studies. The program activities by BOCES staff include pond, seashore and glacial geology, salt marsh study, astronomy, survival, creative interpreters, maple sugaring, orienteering, weather, food and fire, insect study, Project Adventure and more. Call for more details.</p>
<p>BOCES-Earth Balloon (516) 396-2264 (info & bookings)</p>	<p>A 19-foot, inflated model of planet Earth is set up indoors at your school.</p>	<p>The program is designed to get students excited about the continents, the earth's rotation, latitude, time zones, oceans, the seasons, rainforest, the poles, types of maps, geography, human impact on the environment, and much more.</p>

SITE	HABITAT AND/OR FACILITIES	PROGRAM CONTENT
<p>BOCES – Immersion Presents 516-396-2264 www.nassauboces.org/jason/immersion</p>	<p>Multiple ocean going explorations hosted by Dr. Robt. Ballard and a team of researchers</p>	<p>The Project includes teacher training and a comprehensive interdisciplinary curriculum. Call for more details.</p>
<p>BOCES – JASON Project JASON Student Event 516-396-2264 Or see: www..nassauboces.org/jason</p>	<p>For the 2006-07 school year, Nassau BOCES will be hosting this annual event at the Cradle of Aviation – call for more details.</p>	<p>The Project includes teacher training and a comprehensive interdisciplinary curriculum. Call for more details.</p>
<p>BOCES - Just Beyond the Classroom (516) 396-2264 (info & bookings)</p>	<p>School grounds, neighborhood, parks, preserves and north and south shore beaches.</p>	<p>Choice of half-day or full-day class trips. BOCES arranges for the use of the site, provides naturalists, and assists in planning of pre-trip and post-trip activities. Programs are designed to meet specific objectives and generally are supportive of state science syllabi. Call for more details.</p>
<p>BOCES - Boat Programs Shipboard marine biology and oceanography experience (516) 396-2264 (info & bookings)</p>	<p>Nassau BOCES conducts hands-on marine biology programs on a variety of marine research vessels on Long Island's north and south shores.</p>	<p>These programs with BOCES staff are designed to meet the needs and objectives of the individual class, but generally include plankton sampling and analysis, otter trawl, bottom grab and navigation stations. Local history, geology, land use, and fishing may be included on some vessels. Call for more details.</p>
<p>BOCES-Fire Is. National Seashore with BOCES staff -(516) 396-2264 with Park Staff-(631) 661-4876 Sayville Ferry Service P.O. Box 626 Sayville, NY 11782 (631) 589-8980 (to book ferry) (Note: Follow BOCES PO Request/Invoice procedure in order for Park staff program and the ferry to be paid through BOCES.)</p>	<p>Seashore, sand dunes, forest, bay, nature trails. Camping facilities at Watch Hill. Learning laboratory at Sunken Forest, Sailor's Haven.</p>	<p>A field trip by ferry enables offshore marine water sampling. The magnificent "Sunken Forest" which developed amongst the unusual massive dunes is a fragile haven for plant and animal life and allows for comparative studies of bay and ocean beach habitats.</p>

SITE	HABITAT AND/OR FACILITIES	PROGRAM CONTENT
<p>BOCES – Heckscher State Park Heckscher State Parkway East Islip, NY 11730 with BOCES staff- (516) 396-2264 with Park staff - (631) 581-2100 (Note: Follow BOCES PO Request/Invoice procedure for Park staff programs.)</p>	<p>1,657 acres. Woods, beach, excellent campsites.</p>	<p>The site offers an excellent opportunity to explore the Great South Bay with park or BOCES staff. Marine science, forest ecology, and animal life are emphasized.</p>
<p>BOCES – Hither Hills State Park Montauk Highway Montauk, NY 11954 only with BOCES staff (516) 396-2264</p>	<p>1,755 acres. Beach, campsites, Indian reservation.</p>	<p>Programs with BOCES staff include marine science, and sand dune ecology geology of Long Island, and migratory birds.</p>
<p>BOCES – Jones Beach State Park Boat Basin Ocean Drive Wantagh, NY 11793 only with BOCES Staff (516) 396-2264 Group Use Permits –(631)669-1000 x223 - LI State Parks (Permits to be obtained by school)</p>	<p>Beach, dock, grassy area.</p>	<p>Located adjacent to Jones Inlet, and on the Jones Bay, with BOCES staff this site provides for the study of shallow, calm marine waters that depend on oceanic tides. The gently sloped shore encourages the study of a wide intertidal zone. This may be followed with a comparative study with the ocean beach and dune ecology.</p>
<p>BOCES – Starlab (516) 396-2264 (info & bookings)</p>	<p>Portable inflatable planetarium is set up inside your school for a maximum of 28 students at one time. Typically 4-6 sessions are possible within a school day.</p>	<p>Programs introduce students to the beauty and wonder of the night sky as well as important scientific and environmental concepts.</p>
<p>Bronx Zoo Group Sales Dept. Bronx, NY 10460 (718) 220-5141 Congo Room- (718) 220-5135 Site requires check ahead. Call BOCES for special procedure.</p>	<p>With award-winning, cutting-edge exhibits featuring over 4,000 animals</p>	<p>Displays, exhibits, and student programs emphasize the concept of a living creature's dependencies and interrelationships with its natural community. Emphasis is placed upon Wildlife Conservation as a critical factor in enabling man to respond intelligently to changing threats to his environment.</p>
<p>BriSci Consultants – see “Scienceman”</p>		
<p>Brooklyn Aquarium (see NY Aquarium)</p>		

SITE	HABITAT AND/OR FACILITIES	PROGRAM CONTENT
<p>Brookhaven National Laboratory Science Learning Center/Museum Building 129, P.O. Box 5000 Upton, NY 11973-5000 (631) 344-4495 (631) 344-7098 fax http://www.bnl.gov/scied/</p>	<p>The Science Museum is located at Brookhaven National Laboratory. Brookhaven Lab is located on William Floyd Parkway (County Road 46), one-and-a-half miles north the Long Island Expressway (Exit 68).</p>	<p>The museum features inter-active exhibits and programs that demonstrate basic scientific principles and utilize the inquiry method of teaching. Our programs are free for grades 1-8 and open by <u>appointment</u> only. Program length is 1.5 hours for grades 1-5, 2 hours for grades 6-8. The focus is on physical sciences, utilizing the inquiry method of teaching, and addressing New York State Math, Science and Technology Standards 1, 2, 3, 4, & 5</p>
<p>Buehler Challenger & Science Center P.O. Box 647 Paramus, NJ 07653-0647 (201) 262-0984 www.bcsc.org (Call BOCES for special procedure)</p>	<p>Created in 1994 the Center is dedicated to inspiring students, educators, and the community in the pursuit of scientific education.</p>	<p>Employing the concept of simulation in all of its programming, the Center offers a choice of three two-hour space mission simulations as the focal point of its curriculum</p>
<p>"Butterfly Man" – see listing for Rainforest Exploration, Research & Education and/or Steve <u>Fratello</u></p>		
<p>Caleb Smith State Park Preserve P.O. Box 963 Jericho Turnpike Smithtown, NY 11787-0963 (631) 265-1054</p>	<p>A 543-acre preserve comprised of freshwater wetlands, ponds, streams, fields and diverse woodlands.</p>	<p>Programs with park interpretive staff throughout the year on such topics as: water ecology, seasonal changes, L.I. Native Americans, plant-wildlife ecosystem interpretations, geology and environmental issues.</p>
<p>Center for Science Teaching and Learning (CSTL) 1 Tanglewood Rd. Rockville Center, NY 11570 516-764-0045</p>	<p>Tanglewood Preserve offers ponds streams and nature trails and fields on 17 acres. The main center has a science lab and an animal/reptile rescue facility.</p>	<p>In addition to its nature center programs, CSTL also facilitates Museum exhibits at Sands Point Preserve. (example , the Dinosaur exhibit for the 06-07 school year)</p>
<p>Clark Botanic Garden Parks and Recreation Dept. 193 I.U. Willets Rd. Albertson, NY 11507-2298 (516) 484-8600</p>	<p>A 12-acres with variety of specialty gardens complemented by ponds and streams.</p>	<p>Programming includes home gardening, botany, nature, the environment, garden and plant-related crafts through workshops and tours.</p>
<p>Cold Spring Harbor Fish Hatchery 1660 Route 25A Cold Spring Harbor, NY 11724 692-6768</p>	<p>An aquarium building containing large aquariums, four trout-rearing ponds, one turtle pond, one warm water fish pond, two brood stock ponds, one spring pond and a tidal raceway. Adjacent to this property is beautiful fresh water pond that overlooks the Cold Spring Harbor Estuary System.</p>	<p>Displays and programs help students to learn about the fresh water ecosystems of New York State. An exhibit depicts the century old history of the hatchery. Programs emphasize the mechanics of a fish hatchery, man's effect on the natural habitat of fish and turtles and the basic adaptations and needs of life within a fresh water ecosystem.</p>

SITE	HABITAT AND/OR FACILITIES	PROGRAM CONTENT
<p>Colonial Farmhouse Restoration Box 20186 Floral Park, NY 11002 (718) 470-0224 (Formerly Green Meadows Children's Farm)</p>	<p>Over 300 farm animals; pumpkin patch in fall.</p>	<p>Guided tours give students first-hand experience with farm animals and highlights human interaction with their environment.</p>
<p>Cornell Cooperative Extension of Nassau County 1425 Old Country Road, Bldg. J Plainview, NY 11803 (516) 454-0900 www.cce.cornell.edu/nassau</p>	<p>An educational not-for-profit association serving Nassau County residents since 1914 whose volunteers help bring programs into Nassau communities.</p>	<p>Staff and volunteers provide programs and research-based information on horticulture, environmental issues, and outdoor educational camping programs that build resilient communities.</p>
<p>Cornell Cooperative Extension Suffolk County Farm & Ed Center P.O. Box 129 Yaphank, NY 11980-0129 (631) 727-7850 (Call BOCES to verify if specific program selection is aidable as an Outdoor Education trip.)</p>	<p>A working farm</p>	<p>Educational programs focusing on history and agriculture, plus family oriented special events.</p>
<p>Cornell Cooperative Extension Vanderbilt Marine Program Vanderbilt Museum 180 Little Neck Road Centerport, NY 11721</p>	<p>At Vanderbilt Museum</p>	<p>A program of Suffolk County's Cornell Cooperative Extension</p>
<p>Cow Neck Peninsula Historical Society, The 336 Port Washington Boulevard Port Washington, NY 11050 (516) 365-9074 Website: www.cowneck.org</p>	<p>At Sands-Willets House Museum (c. 1735-1840)</p>	<p>Hands-on program designed to show how children lived on L.I. farms in the 18th and 19th centuries, as well as how the region was settled and developed.</p>
<p>Cradle of Aviation 1 Davis Ave. Garden City, NY 11530 (516) 572-4111 www.cradleofaviation.org (Call BOCES for special procedure)</p>	<p>School groups are spell-bound as they enter the four-story glass atrium and gaze upon a diverse sampling of aircraft. Each of the eight galleries delivers another "wow experience".</p>	<p>Students travel through time seeing 70 air and space craft from hot air balloons to an actual lunar module, opening their eyes to Long Island's contributions to aviation, aeronautics and space travel.</p>

SITE	HABITAT AND/OR FACILITIES	PROGRAM CONTENT
<p>Deep Hollow Ranch PO Box 835, Ranch Road Montauk, NY 11954 (631) 668-2744</p>	<p>America's oldest cattle ranch established in 1658. 3000 acres.</p>	<p>History of Long Island – living history program</p>
<p>Dolan DNA Learning Center (Make PO Request to Cold Spring Harbor Laboratory) One Bungtown Road Cold Spring Harbor, NY 11724 (516) 367-5170</p>	<p>Museum program with exhibits; experiential laboratory. Class size limited to 24 students.</p>	<p>The Bio2000 Teaching laboratory is designed to involve students in experience based learning about techniques of genetic manipulation.</p>
<p>Fire Island National Seashore (see BOCES-Fire Island National Seashore)</p>		
<p>Fort Salonga Farm 30 Meadow Glen Road Northport, NY 11768 631) 269-9666</p>	<p>Orchard and farm.</p>	<p>Apples, raspberries, and pumpkins, etc. in season. Class tours are available for children in Pre-K to Grade 2.</p>
<p>Steve Fratello – “Butterfly man” 11 First St West Islip, NY 11795 631 321-1509 sfratell@suffolk.lib.ny.us</p>	<p>Classroom-based program</p>	<p>Explorer/Naturalist Steve Fratello has explored the world's tropical rainforests for approximately 1,000 days including leading scientific expeditions for major museums. Students will be in awe at the beauty and variety of tropical rainforest life conveyed in these presentations.</p>
<p>Garvies Point Museum and Preserve Barry Drive Glen Cove, NY 11542 (516) 571-8010 (Need two separate PO Request/Invoices - call BOCES for special procedure)</p>	<p>72-acre preserve with 5 miles of trails. Forest, thickets, meadows, high cliffs/rocky beach.</p>	<p>Exhibits depict Long Island geology and natural history. Exposed cretaceous sediments along the cliffs, post-glacial changes in climate and sea level, and natural succession are highlighted in the field programs.</p>
<p>Goudreau Math Museum 999 Herricks Rd New Hyde Park, NY 11040-1302 (516) 747-0777 www.mathmuseum.org</p>	<p>Workshops and programs conducted at the museum and in schools.</p>	<p>The museum offers math-related programs and special events.</p>
<p>Green Meadows Farm (see Colonial Farmhouse Restoration)</p>		

SITE	HABITAT AND/OR FACILITIES	PROGRAM CONTENT
<p>Gregory Museum L.I. Earth Science Center Heitz Place Hicksville, NY 11801 (516) 822-7505</p>	<p>Displays, mineral laboratory; workroom, classrooms.</p>	<p>Rock, mineral, fossil, and insect displays are designed with stress on preservation/awareness of the natural environment.</p>
<p>Hall of Science (see New York Hall of Science)</p>		
<p>Hayden Planetarium (see American Museum of Natural History)</p>		
<p>Heckscher State Park (see BOCES-Heckscher State Park)</p>		
<p>Hither Hills State Park (see BOCES-Hither Hills State Park)</p>		
<p>Hoyt Farm New Highway Commack, NY 11725 (see Suffolk County Archaeological Assoc.)</p>		
<p>Huntington Historical Society 109 Main Street Huntington, NY 11743 (631) 427-7045 (for Kissam House)</p>	<p>This historic 1795 home houses a collection of antique furnishings, artwork and costumes.</p>	<p>Life in the 1800's is explained, including "recycling" of the times.</p>
<p>International Fauna Society, The Fauna's Serpentarium 213 East Main Street Riverhead, NY 11901 (631) 722-5488</p>	<p>This site has over 200 animals on display in more than 70 naturalistic exhibits.</p>	<p>Take a guided tour. You will be amazed by the animals you see, feel and touch. Ask questions and enhance your understanding of the worlds fauna with live animal presentations.</p>
<p>Intrepid Sea and Air Space Museum Pier 86 West 46th St. and 12th Ave. New York, NY 10036 (212) 245-2533 www.intrepidmuseum.org</p>	<p>In addition to the aircraft carrier Intrepid, the submarine Growler and the destroyer Edson offer unique opportunities for the public to experience what it was like to serve both above and beneath the sea through war and peace</p>	<p>On the Intrepid's flight deck over thirty aircraft tell the story of aviation, while in the ship's hanger deck, a variety of exhibits honor our heroes and give the public a glimpse of the high tech hardware being developed to defend our future. Visitors can climb inside a replica of a Revolutionary War submarine, sit in an A-6 Intruder cockpit, and follow the progress of American astronauts as they work in space.</p>

SITE	HABITAT AND/OR FACILITIES	PROGRAM CONTENT
<p>I Fish NY Malynda J. Nichol, Recreational Fisheries Specialist New York Sea Grant Stony Brook University - Bldg. 40 Stony Brook, NY 11790 Phone: 631.444.0283 Fax: 631.444.0272 website: http://www.seagrantsunysb.edu/ifishny/</p>	<p>Classroom based and/or use of a local water habitat near your district. Also available to be a part of your BOCES shipboard program.</p>	<p>FISH NY Activity Programs: Go Fish! Fishing Trip and Safety Practices; Pin the Tail on the Fish-Fish Anatomy and Identification; Here Fishy, Fishy, Fishy...Fish Adaptation and Ecosystem Interactions; One Fish, Two Fish, Red Fish, Blue Fish-Fisheries Management and Ethics; Got Hooks? Tackle and Site Overview; One Crabby Patty Please...Seafood Safety</p>
<p>Japanese Stroll Garden The Garden Conservancy Program site: Dogwood La. Mill Neck, NY 11560 (516) 676-4486 for reservations Mail Address: P.O. Box 219 Cold Spring, NY 10516 (914)265-2029</p>	<p>Stones, plants, and water are essential elements in this sloping woodland garden. Paths meander by fountains, lanterns, ponds, and symbolic plant and stone arrangements.</p>	<p>Guided tour of garden honoring the Japanese reverence for nature. The garden is a reflection of Japanese design techniques and philosophy.</p>
<p>Jones Beach State Park (see BOCES-Jones Beach State Park)</p>		
<p>John F. Kennedy Wildlife Sanctuary Town of Oyster Bay Tobay Beach Ocean Parkway Wantagh, NY 11793 (516) 785-9412</p>	<p>500 acre stretch of sand dunes, salt marsh, shallow pond, pine groves. Access road, parking lot, tower, signs, and trails.</p>	<p>The preserved wetlands and marshes serve as a breeding nursery for higher forms of marine life, as well as provide a nesting site of migratory North American birds. It is one of the most important refuges for water-fowl in the Northeast on the Atlantic flyway.</p>
<p>Kissam House (see Huntington Historical Society)</p>		
<p>Henry Lappen – Visiting Expert (see “Birds in Their Habitat”)</p>		
<p>Liberty Science Center 251 Phillip St. Jersey City, NJ 07305-4699 (201) 200-1000 for reservations (Call BOCES for special procedure to follow)</p>	<p>Three floors with over 250 exhibits on the environment, health, and inventions; OMNI Theater; Science Theater.</p>	<p>Explore, observe and interact with the exhibits. Programs include the ocean's bottom and outer space at the OMNI theater; Scientists on Stage; and instructional/audience interaction theater presentations.</p>
<p>Joseph Lloyd Manor House 1 Lloyd Lane Lloyd Harbor, Huntington, NY 11743 (631) 941-9444</p>	<p>This manor house was constructed around 1767 by Joseph Lloyd.</p>	<p>Life in the 1800's is explained, including “recycling” of the times</p>

SITE	HABITAT AND/OR FACILITIES	PROGRAM CONTENT
<p>L.I. Center for Arts and Sciences 565 Caledonia Road Dix Hills, NY 11746 (631) 423-1572 Victoria DeLuise, Director</p>	<p>In-school programs.</p>	<p>Hands-on in-school science learning programs for Grades K-8 such as deserts, bugs, birds, endangered species, rocks, magnets and fossils.</p>
<p>Long Island Children's Museum 11 Davis Ave. Garden City, NY 11530 (516) 222-0207 (recording) (516) 222-0219 (bookings) www.licm.org</p>	<p>Long Island Children's Museum is a learning laboratory setting.</p>	<p>Hands-on exhibits invite visitors to experiment, examine and play. Through lively interdisciplinary activities, children and adults can share in the excitement of the learning process as they explore the world in which we live. The Museum is designed for kids 2 to 12 and their grownups.</p>
<p>Long Island Game Farm Chapman Blvd. Manorville, NY 11949 (631) 878-6644</p>	<p>Nestled in a beautiful 300-acre pine forest, everyone has a chance to enjoy a wide variety of animals up close.</p>	<p>Monkeys, llamas, bears, buffalo, antelope, and many others make their home here. There live professional animal shows as well as animal educational talks, complete with demonstrations and information about the various exotic animals that live here.</p>
<p>Long Island Museum of American Art, History, and Carriages, The (formerly Museum at Stony Brook) (AKA Stony Brook Museum) 1200 Route 25A Stony Brook, NY 11790 (631) 751-0066</p>	<p>Museum collections housed in 3 separate buildings</p>	<p>Wagons West, "Birds, Bays and Baymen" and "Long Island Long Ago" programs. For any other programs, call BOCES Outdoor Ed, 396-2264, for prior approval.</p>
<p>Mad Science of Long Island Claudio Superville or Jessica Alfieri Phone: 516-620-6768 Fax: (516) 706-4863 email: info@madscienceli.com http://www.madscience.org/nassau</p>	<p>Classroom/assembly-type programs</p>	<p>Various science topics are available.</p>
<p>Mobile Ed Productions http://www.mobileedproductions.com/ Suzanne Gardner suzanneg@mobileedproductions.com</p>	<p>Classroom/assembly-type programs</p>	<p>Various programs dealing with science subjects. Only the assembly programs about animals, earth science and the environment are available for aid.</p>
<p>Museum of Natural History (see American Museum of Natural History)</p>		
<p>Museum at Stony Brook (see LI Museum of American Art, History, and Carriages)</p>		

SITE	HABITAT AND/OR FACILITIES	PROGRAM CONTENT
<p>Muttontown Preserve Muttontown Lane East Norwich, NY 11732 (516) 571-8500</p>	<p>500-acre preserve with 10 miles of trails. Moist woodland, field, kettle ponds, education building/visitors center.</p>	<p>The expansive coniferous and deciduous woods contain both common and rare plants native to Long Island forest ecology. The interrelationships among communities in nature are emphasized.</p>
<p>New York Aquarium Boardwalk and West 8th St. Brooklyn, NY 11224 Attn: Joe Minieri (718) 265-3495 (aka Aquarium for Wildlife Conservation and Brooklyn Aquarium)</p>	<p>2500 animals in over 100 exhibits; cafeteria</p>	<p>Marine life exhibits, hands-on exhibits, lectures and tours.</p>
<p>New York Botanical Gardens 200 St. and Southern Blvd. Bronx, NY 10458-5126 (718) 817-8181 FAX: (718)817-8829 (Need to have BOCES PO# on the day of the trip; call BOCES for special procedure.)</p>	<p>A 250-acre park</p>	<p>For Grades Pre-K through 8 and teachers with a range of guided programs, self-guided programs, and hands-on workshops that stimulate enthusiasm for learning plant science.</p>
<p>New York Hall of Science 47-01 111th St. Corona, NY 11368 (718) 699-0301 and (718) 699-0005</p>	<p>Exhibits</p>	<p>Hands on exhibits; guided student workshops. Also "Big Science Days" – exclusive use of facility for up to 500 students.</p>
<p>New York Zoological Society (see Bronx Zoo)</p>		
<p>North Shore Science Museum (see Science Museum of L.I.)</p>		
<p>North Wind Undersea Institute 610 City Island Ave City Island, NY 10464 (718) 885-0701</p>	<p>Museum, including an exhibition room, aquariums and a 4,000-gallon research tank.</p>	<p>Marine Mammals, Oceanomics Seamanship, The Living Reef Nature lks, Energy from the Sea.</p>
<p>Old Bethpage Restoration Round Swamp Road Old Bethpage, NY 11804 (516) 572-8400</p>	<p>Recreated typical Long Island agricultural community of the pre-Civil War Period, over 2 dozen buildings on a 200-acre site, active farm which illustrates food production.</p>	<p>Program exhibits and activities stress reverence and dependence upon the land for basic food, shelter, and clothing needs. Techniques for food productions, preparation, and preservation are illustrated.</p>

SITE	HABITAT AND/OR FACILITIES	PROGRAM CONTENT
<p>Old Westbury Gardens P.O. Box 430 Old Westbury, NY 11568 (Buses enter at 60 Post Rd.) (516) 333-0048 – Ed Coordinator Regina Watkins FAX: (516) 333-6807 (Call BOCES for availability of aquatic program)</p>	<p>160 acres of sweeping lawns, rolling fields, meadows, woodlands, lakes, ponds, and formal and naturalized gardens. The grounds are home to many species of songbirds, aquatic birds and raptors as well as butterflies, turtles, frogs and fox. Lunch at Café in the Woods or in our picnic area.</p>	<p>The grounds provide the setting for a study of botany conducted by Old Westbury Gardens' docents. An aquatic study of a woodland pond is an option provided in cooperation with BOCES Outdoor Education naturalists. After the program students may take a guided tour of The Charles II-style house and extensive gardens. Old Westbury Gardens is on the National Register of Historic Places.</p>
<p>Oyster Bay Historical Society Earle-Wightman House PO Box 297 Oyster Bay, NY 11771</p>	<p>Program location is 20 Summit St., Oyster Bay, NY</p>	<p>Students are transported back in time to a circa 1740 one-room settler's dwelling. They learn, through period activities, how a family might have lived. Then, stepping through a time portal, the students are thrust ninety years into the future, into the 1830 parlor of the Reverend Marmaduke Earle and his family.</p>
<p>Party Pets (information coming)</p>		
<p>Planting Fields Arboretum Planting Fields Rd. Oyster Bay, NY 11771 (516) 922-8668 PO request to: Planting Fields Foundation Coe Hall PO Box 58 Oyster Bay, NY 11771</p>	<p>409 acres. Horticultural center; plant, tree, and shrub collections, greenhouses nature trails, library, meeting rooms. Cultivated area, woodland, hedgerow, upland secondary forest.</p>	<p>Horticulture. Contrast of cultivated and natural plant habitats.</p>
<p>Prospect Park Wildlife Center 450 Flatbush Ave Brooklyn, NY 11225 (718) 399-7333 (Call BOCES for special procedure)</p>	<p>Reopened in fall of 1993, the Wildlife Center offers great opportunities for family or group outings.</p>	<p>Exhibit areas include Animal Lifestyles, Animals in Our Lives, and the World of Animals. There are many School Programs, including <i>Home Sweet Home</i> (pre-K-K), <i>Predator/Prey</i> (grades 1 - 3), <i>The Endangered Ones</i> (4 – 8, and <i>Issues in Conservation</i> (9 – 12).</p>
<p>Queens Botanical Gardens (718) 886-3800, X230 Education (Needs check ahead; Call BOCES for special procedure)</p>	<p>In schools or gardens</p>	<p>Wide variety of tours and workshops related to plants.</p>
<p>Queens County Farm Museum 73-50 Little Neck Parkway Floral Park, NY 11004 (718) 347-3276</p>	<p>This 47-acre tract of farmland, of which 7 acres are landmark designated, exemplifies the 200 year history of agriculture as a way of life and livelihood in Queens County.</p>	<p>This park features planted fields and grazing livestock to illustrate the basic workings of a farm. Visitors can also learn about the rich history of the site through tours of the Adriance Farmhouse which combines Dutch and English architectural styles.</p>

SITE	HABITAT AND/OR FACILITIES	PROGRAM CONTENT
<p>Queens Wildlife Center 53-51 111th St. Flushing, NY 11368 718-271-7361 (Call BOCES for special procedure)</p>	<p>Devoted to magnificent North American animals, divided into "Wild" and "domestic" areas, this zoo houses some 250 animals of 40 species. There is an Education Center, where people of all ages can learn about wildlife and plants.</p>	<p>Explore pockets of North American habitat, from the great American Plains to a rocky California Coast, to a Northeastern Forest. A great aviary and a real marsh habitat are homes for native wildlife and a wide variety of birds. School programs are offered and can be customized to suit students' needs.</p>
<p>Queens Zoo (see Queens Wildlife Center)</p>		
<p>Rainforest Exploration, Research and Education Steve Fratello – "Butterfly man" 11 First St West Islip, NY 11795 631 321-1509 sfratell@suffolk.lib.ny.us</p>	<p>Classroom-based program</p>	<p>Explorer/Naturalist Steve Fratello has explored the world's tropical rainforests for approximately 1,000 days including leading scientific expeditions for major museums. Students will be in awe at the beauty and variety of tropical rainforest life conveyed in these presentations.</p>
<p>Raynham Hall 20 W. Main St. Oyster Bay, NY 11771 (516) 922-6808</p>	<p>Raynham Hall is a twenty-room house museum that transports you back into the life and times of the Townsends, one of the founding families of the Town of Oyster Bay.</p>	<p>The Museum is open to the public year-round for visits, tours, educational programs and research. See how Long Islanders from centuries past lived, learned, worked and played as you experience first-hand more than 200 years of American history.</p>
<p>Riverhead Foundation for Marine Research 431 East Main St. Riverhead, NY 11901 (631) 369-9840</p>	<p>Cruises to study marine life.</p>	<p>Whale Watch Cruises, slide presentations, Marine Mammal Biology, stranding programs, field walks, Natural History Tours.</p>
<p>Sciencceman Brian Wallrap / BriSci Consultants 124 N. Elm Street N. Massapequa, NY 11758 (516) 798-7678 BriSci45@yahoo.com</p>	<p>Classroom-based program</p>	<p>Programs include Spiders, Magnet Man, Mr. Science and Mineral Man. Programs are suitable K-6.</p>
<p>Serpentarium, The (see International Fauna Society)</p>		
<p>Theodore Roosevelt Home (see Sagamore Hill)</p>		

SITE	HABITAT AND/OR FACILITIES	PROGRAM CONTENT
<p>Theodore Roosevelt Nature Center NYS Parks Dept. Jones Beach State Park PO Box 1000 Wantagh, NY 11793 (516) 679-7254</p>	<p>Exhibit area and classroom at Jones Beach State Park</p>	<p>School programs are on a broad range of natural history topics – marine ecology, glacial geology, whales and adaptations to name a few.</p>
<p>Theodore Roosevelt Sanctuary, Inc. 134 Cove Rd. Oyster Bay, NY 11771 (516) 922-3200</p>	<p>Located on 12 acres of upland woods on the north shore with access to a salt marsh and the Long Island Sound. A trailside museum; live animals.</p>	<p>Ecology and animal adaptation programs are offered for K-adult. School-site based programs are available.</p>
<p>Sagamore Hill (Theodore Roosevelt Home) Cove Neck Road Oyster Bay, NY 11771 (516) 922-4447</p>	<p>Trailside Museum, wooded trails, near bay, beach, and salt marsh.</p>	<p>This ecological and historical landmark, which contains five natural habitats, provides a comprehensive, comparative environmental study. There is a wide variety of trees, food producing shrubs and vines, and birds on the site.</p>
<p>Salamander Solutions 30 Washington Avenue Bayville, NY 11709 (516) 628-1798 e-mail: KREISB@AOL.COM</p>	<p>Community-based environmental education</p>	<p>Mission is to improve the connection people have to the land through hands-on studies of natural and human history in local communities to help children and adults gain a greater sense of wonder, knowledge, joy and reverence for the place in which they live.</p>
<p>Sands Point Park and Preserve 127 Middle Neck Road Port Washington, NY 11050 (516) 571-7900 (Need 2 separate PO/Request Invoice forms - Call BOCES for special procedure)</p>	<p>210-acre park. A nature center contains displays interpreting the natural preserve. Natural habitats include woodlands, fields, a beach, and a freshwater pond.</p>	<p>Outdoor environment ecosystem programs on the inter-relationships of plants and animals. Indoor programs offered on current exhibit.</p>
<p>Sands-Willets House Museum (see Cow Neck Peninsula Historical Society)</p>		
<p>F & W Schmitt Brothers Farm Mailing address: 26 Pinelawn Road, Melville, NY 11747 Farm site: Exit 49, Old Walt Whitman Rd & South Service Rd of LI Expressway (631) 423-5693</p>	<p>Working 35-acre farm</p>	<p>View farm animals (not petting zoo), pumpkin picking, and hayrides for up to Grade 2.</p>

SITE	HABITAT AND/OR FACILITIES	PROGRAM CONTENT
<p>Science Museum of Long Island (formerly North Shore Science Museum) Mail address: P.O. Box 908 Plandome Manor, NY 11030 Site at: Leeds Pond Preserve 1526 N. Plandome Rd. Plandome Manor, NY 11030 (516) 627-9400</p>	<p>Woods, meadow, lawns, pond, streams, and access to salt water and marshland at shoreline on Manhasset Bay.</p>	<p>Contrast studies are conducted among brackish water, fresh water, and salt water habitats. Activities focus on quality of drinking water and soil. Effects of Environmental factors are observed in tree growth.</p>
<p>Serpentarium at Riverhead, The (see International Fauna Society)</p>		
<p>Smith Park Preserve, Caleb (see Caleb Smith Park Preserve)</p>		
<p>Soundwaters, Inc Cove Island Park 1281 Cove Road Stamford, CT 06902-5457 (203) 323-1978</p>	<p>Schooner SoundWaters and Center</p>	<p>SoundWaters fulfills its mission of education by showing guests up close the beauty of the Sound and its denizens. The SoundWaters mission is not just on the water. When the schooner is docked, there is also the SoundWaters Community Center for Environmental Education on Cove Island which has two rooms of exhibits, including aquaria and a touch tank.</p>
<p>Stony Brook Grist Mill Make PO Request to: Ward Melville Heritage Organization PO Box 572 Stony Brook, NY 11790 (631) 751-2244 FAX: (631) 751-2024</p>	<p>Adam Smith built the Stony Brook Grist Mill in 1751. All of the machines are powered by water.</p>	<p>You can visit and tour the Stony Brook Grist Mill and then feed the ducks at the millpond.</p>
<p>Stony Brook Museum (see LI Museum of American Art, History and Carriages)</p>		
<p>Suffolk County Archeological Assoc. (programs at Hoyt Farms and Blydenburgh Park) P.O. Box 1542 Stony Brook, NY 11790 (631) 929-8725</p>	<p>Hoyt Farm Park buildings include a Nature Center and farm structures. Activity sites include an archaeological dig site, Indian trail, nature trails and many unique geological features that can be used to study earth science.</p>	<p>Native Life and Archaeology activities: Ethnobotany on nature trails Making fire and shelters Participation in a professionally supervised archaeological excavation</p>

SITE	HABITAT AND/OR FACILITIES	PROGRAM CONTENT
<p>Suffolk County Farm & Education Center (see Cornell Cooperative Extension – Suffolk)</p>		
<p>Sunken Forest (see BOCES – Fire Is. National Seashore)</p>		
<p>Sweetbriar Nature Center 62 Eckernkamp Dr. Smithtown, NY 11787 (631) 979-6344 FAX- (631) 979-9771 (Call BOCES for special procedure)</p>	<p>The center is situated on 54 acres of varied garden, woodland, field and wetland habitats on the Nissequogue River. Hundreds of species of plants and animals make homes here.</p>	<p>This center provides natural science education services for Long Island residents of all ages and engages in native wildlife rehabilitation services. Through education and examples, it encourages responsible decision making, appreciation, and respect for the unique wildlife and ecosystems found on Long Island.</p>
<p>Tackapausha Museum and Preserve Washington Avenue Seaford, NY 11783 (516) 571-7443 (site) (516) 922-3200 (booking) (Request check made out to: Theodore Roosevelt Sanctuary mail to: 134 Cove Rd. Oyster Bay, NY 11771)</p>	<p>80-acre preserve with 5 miles of trails. Grassy area, wet and deciduous woods, swamps.</p>	<p>Exhibits depict Long Island plant and animal life. The preserve is a stopping place for migratory birds and has one of the last stands of Atlantic white cedar on Long Island. Adaptations to the environment, including the weather, are stressed.</p>
<p>Vanderbilt Museum P.O. Box 605 180 Little Neck Road Centerport, NY 11721 (631) 854-5555</p>	<p>This forty-three acre estate houses a historical mansion as well as museum</p>	<p>There are displays of wildlife and exhibits of natural history.</p>
<p>Vanderbilt Planetarium P.O. Box 605 180 Little Neck Road Centerport, NY 11721 (631) 854-5555</p>	<p>Planetarium, exhibits</p>	<p>The study of earth science and celestial bodies emphasizes the positions of the earth, stars, and planets, and the factors influencing the earth's environment.</p>
<p>Volunteers for Wildlife 27 Lloyd Harbor Road Huntington, NY 11743 (631) 423-0984</p>	<p>This Wildlife Hospital and Education Center at Caumsett State Historic Park in Huntington accepts and rehabilitates sick, injured, and displaced young wildlife.</p>	<p>Wildlife education programs for Long Island schoolchildren and adults. The participation of their permanently non-releasable birds, animals, and reptiles make these programs an exciting way to learn about the special needs of Long Island's wildlife.</p>

SITE	HABITAT AND/OR FACILITIES	PROGRAM CONTENT
Waterfront Center, The One West End Avenue, Oyster Bay, NY 11771 (516) 922-7245 x24 www.thewaterfrontcenter.org	Marine Education Center and Sailing Facility located on West Harbor, a National Wildlife Refuge. Indoor salt water display tanks and touch tank, beach and estuary habitat, oyster loop, Christeen	Marine education programs for K through 12 onsite at WFC (some may be presented in your classroom). Various programs include: live marine animals, beach, salt marsh and estuary exploration, shipboard science and water quality testing and plankton study, oyster hatchery tour and dissection, stewardship education.
Whaling Museum, The P.O. Box 25 Cold Spring Harbor, NY 11724 (631) 367-3418	Exhibits and films.	Exhibits and films plea for the protection and preservation of whales, explain the behavior of whales, and illustrate the effects of whaling on the whale population.
White Post Farms 250 Old Country Road Melville, NY 11747 (631) 351-9373 (Call BOCES for special procedure)	Farm where over 300 animals and birds live year round.	Offers various field trip programs on such things as planting seedlings, etc. Hayrides and pumpkin picking in the fall.
Wildlife Conservation Society 2300 Southern Blvd. Bronx, NY 10460 (718) 220-5135 (Call BOCES for special procedure)	Bronx Zoo, NY Aquarium and Prospect Park Zoo, Queens Zoo, etc.	See Bronx Zoo, NY Aquarium, and Prospect Park Zoo program contents.

**"BOCES" sites, UNLESS OTHERWISE NOTED,
 do not require BOCES PO Request/Invoice procedure.
 ALL OTHER SITES require BOCES PO Request/Invoice procedure.**

**NOTE: OTHER SITES MAY BE USED PENDING PRIOR BOCES APPROVAL
 CALL OUTDOOR EDUCATION, (516) 396-2264.**

**Nassau BOCES - Office of Outdoor Education
RESIDENT CENTERS**

SITE	HABITAT AND/OR FACILITIES	PROGRAM CONTENT
<p>Ashokan Outdoor Environmental Education Center 477 Beaverkill Road Olivebridge, NY 12461 (845) 657-8333 FAX (845) 657-8489</p>	<p>Located on 372 acres in the Catskill Mountain foothills. Habitats include forest, field, lakes, ponds, and streams. Buildings include colonial craft shops and schoolhouse and working farm. Challenge ropes course.</p>	<p>Environmental awareness is explored through the historic perspective of colonial America and the modern perspective of ecological concern - all with a stress on hands-on learning.</p>
<p>BOCES Environmental Ed. Center at Brookville 193 Brookville Road Brookville, NY 11545 (516) 626-1420 (site) (516) 396-2264 (info & bookings)</p>	<p>20 acres. Woods, log cabin, blacksmith shop, classroom building. Complete Project Adventure Course available.</p>	<p>The Homestead Ecology Program at Brookville reproduces the way of life of the early settlers. It became necessary for the settlers to carve out an existence from their own immediate environment. An extensive Challenge course is also on site. Students stay in tents overnight.</p>
<p>BOCES Environmental Ed. Center at Caumsett State Historic Park 29 Lloyd Harbor Road Huntington, NY 11743 (631) 549-0071 (site) (516) 396-2264 (info & bookings)</p>	<p>1600 acres. Fields, woods, seashore, pond, salt marsh, Project Adventure course, year-round building which includes dormitory rooms, dining room, classrooms.</p>	<p>The day and resident programs emphasize contrast and comparison studies. The program activities by BOCES staff include pond, seashore and glacial geology, salt marsh study, astronomy, survival, creative interpreters, maple sugaring, orienteering, weather, food and fire, insect study, Project Adventure and more. Students are housed in the "summer Cottage" of the former Marshall Field III estate.</p>
<p>Camp DeWolfe PO Box 487 North Side Road Wading River, NY 11792 Tel: 631 929-4325 Fax: 631 929-6553 campdewolfe@aol.com kvloomis@aol.com</p>	<p>The Center hosts youth and adult retreat groups, educational and community programs throughout the year, in addition to summer camp.</p>	<p>Located on a wooded bluff above the LI Sound, with its own shoreline, the site offers a nearby river, lake, and salt marsh for nature study and comfortable year-round accommodations for 135 people. Examples of course offerings: <u>Environmental Study</u>: Geology, Salt marsh, Seashore, or Pond Ecology, IEstuary & Stream Exploration. <u>Outdoor Education</u>: Map & Compass, Wilderness Survival, Orienteering, & Group Challenge (Adventure Games, Challenge Course & Climbing Wall), <u>ips</u>, <u>Natural Helpers</u>, <u>Conflict Resolution</u> & <u>Anti-Bullying</u>.</p>
<p>Camp Jewell 6 Prock Hill Road North Colebrook, CT 06021 (860) 379-2782</p>	<p>500 Acres (including a 78-acre lake), streams, and forests. Dormitories and dining hall.</p>	<p>Contrasts are conducted of plant and animal life in the terrestrial and aquatic communities. A mountain climb introduces students to a variety of ecological concepts, including "zonation" and "adaption" of plant and animal life.</p>
<p>Camp Mason Birch Ridge Road Blairstown, NJ 07825</p>	<p>Field, pond, stream.</p>	<p>Ecological variety of habitats are effectively used to develop a concept in adaptation, communities in nature and relationship of man to his natural environment.</p>

SITE	HABITAT AND/OR FACILITIES	PROGRAM CONTENT
<p>Dorothy P. Flint 4-H Camp (Riverhead) Cornell Coop Extension Nassau County 40 main Street Hempstead, NY 11550 516-292-7990</p>	<p>This 140 acre education site is available for programming year-round. It includes forested, farm and open recreational areas and access to the beach. The main center has a dining lodge for 200 and rustic cabins can accommodate large groups Sept- - Oct and May. Groups of 30 can be housed in heated facilities year round</p>	<p>The site includes forested, farm and open recreational areas and access to the beach. A n adventure ropes course is also available.</p>
<p>Fairview Lake Environmental Education Center 1035 Fairview Lake Road Stillwater, NJ 07860 (973) 383-9282</p>	<p>600 acres of open and forested land, 110- acre lake, ponds, maple swamp with board walk, challenge course. Accommodations for 300.</p>	<p>A variety of ecology and outdoor skills programs provide students and teachers with the opportunity to live and learn together and become more aware of our natural world.</p>
<p>Frost Valley YMCA Environmental Education Center Box 55, 2000 Frost Valley Rd. Claryville, NY 12725-9600 (845) 985-2291 (845) 985-0056 FAX</p>	<p>Located on 4600 forested acres in the Catskills. 50 cabins/lodges, central dining hall and unique Resource Management Center and Greenhouses, ropes course.</p>	<p>Schools may participate in environmental, outdoor skills and adventure-based programs.</p>
<p>Greenkill Outdoor Environmental Ed Center see YMCA-YWCA Camping Services</p>		
<p>Mount Tone (Lohikan Centers) 12 South 21st St. Kenilworth, NJ 07033 (570) 842-2544 (for billing)</p>	<p>A four-season facility on over 1100 acres of forest land specializing in environmental education in Pennsylvania's Northeastern Pocono Mountains</p>	<p>Programs are designed to sensitize students to their environment and spark their curiosity and imagination in such areas as forest ecology, wildlife, winter worlds, rock formation, and alternative energy.</p>
<p>Pocono Environmental Education Center (PEEC) RD 2, Box 1010 Dingmans Ferry, PA 18328 (570) 828-2319 FAX (570) 828-9695</p>	<p>The largest residential center in the western hemisphere is situated on 36 acres and is surrounded by 200,000 acres of public land. Over 45 cabins will house between 3-12 each.</p>	<p>PEEC uses the outdoors as its classroom to promote environmental awareness, knowledge and outdoor skills. A variety of programs are offered for school groups, youth-at-risk groups and teacher and staff development.</p>
<p>Quinipet Camp & Retreat Center PO Box 549 End of Shore Road Shelter Island Heights, NY 11965 Phone: 631.749.0430 Fax: 631.749.3403 Email: quinipetinfo@hotmail.com</p>	<p>The site is located on the rocky shores of the northwest corner of Shelter Island, The program can accommodate groups of 10 to 150, ages 7 and up. Our programs run anywhere from 1 to 5 days.</p>	<p>All programs are individually designed around your needs and can incorporate state standards for your grade level. The site provides hands on experiences in both woodland and coastal habitats as well as geologic clues to the formation of Long Island and map and compass skills. The Quinipet Adventure Challenge Course, is located on 30 acres of woods, waterfront and playing fields.</p>

SITE	HABITAT AND/OR FACILITIES	PROGRAM CONTENT
YMCA-YWCA Camping Services of Greater New York Camp Headquarters P.O. Box B Huguenot, NY 12746 (845) 858-2200 FAX: (845) 858-7823	Located on a 1000 acre in Southern Catskills. Diverse forested terrain, streams and 3 lakes. Four new lodges accommodate 40 people each.	The concept of interrelationships is stressed in the varied environmental programs as well as on the Project Adventure course and outdoor skills programs.

NOTE: OTHER RESIDENT FACILITIES MAY BE APPROVED
PENDING BOCES EVALUATION OF PROGRAM, FACILITIES AND STAFF.
CALL OUTDOOR EDUCATION (516) 396-2264 PRIOR TO MAKING RESERVATIONS.

To Administrators and Teachers ... If you wish any more information regarding
 programs in the out-of-doors, please contact:

Nassau BOCES - Outdoor Education
 (516) 396-2264

Board of Cooperative Educational Services of Nassau County

George Farber, *President*
Iris Wolfson, *Vice-President*
Arline Strumeyer, **District Clerk**
Stephen B. Witt, **Vice District Clerk**
Susan Bergtraum
Robert E. Lupinskie
Gale Ross-Srulevich
Eric B. Schultz
Michael Weinick

Dr. James D. Mapes
District Superintendent

Department of Instructional Programs and Alternative Schools

Lucinda P. Hurley
Executive Director
Patricia Busset
Assistant Director

Outdoor and Environmental Education

Carolann James
Supervisor

Residential Programs
Classroom Programs
Marine Biology/Oceanography
Summer Programs
JASON Project
Immersion Presents

www.nassauboces.org/enviroed