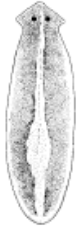


This is a Key similar to the ones you might use with the naturalist to identify the organisms you find at the Pond. From [www.wirral.gov.uk/downloads/175](http://www.wirral.gov.uk/downloads/175)

# Ponds - freshwater ID sheet

**Worms** - simple soft bodied animals with no limbs.

Flatworm



Leech



**Molluscs** - animals with soft muscular bodies and a hard shell.

Great pond snail



Pea cockle



Ramshorn snail

Wandering snail



**Crustaceans** - animals with more than eight legs, segmented bodies and a hard exoskeleton.

Water flea (microscopic)



Cyclops (microscopic)



Waterlouse



Water shrimp



Fish louse

**Insects** - animals with six legs and three body sections.



Phantom midge larva

Bloodworm



Mosquito larva



Caddisfly larva



Mayfly nymph



Alderfly nymph



Great diving beetle larva



Damselfly nymph



Dragonfly nymph (hawker)

Dragonfly nymph (darter)



Gnat pupae



Lesser water boatman



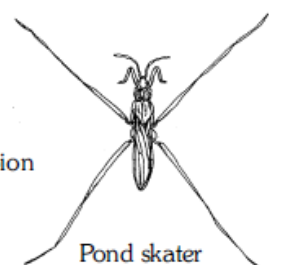
Greater water boatman or backswimmer.



Great diving beetle



Water scorpion



Pond skater

**Arachnids** - have eight legs

Water mite (red)



**Amphibians** - animals which live mostly on land but return to water to breed.



Tadpole (Frog tadpoles are brown and speckled, toad tadpoles are black and shiny.)



Smooth newt

**Pisces** - fish



Three spined stickleback



Froglet



Newt tadpole (eft)