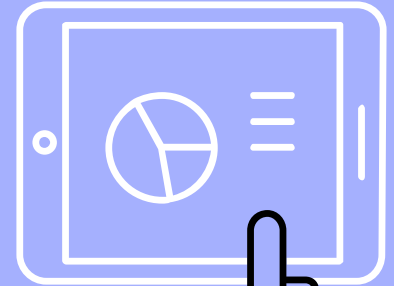
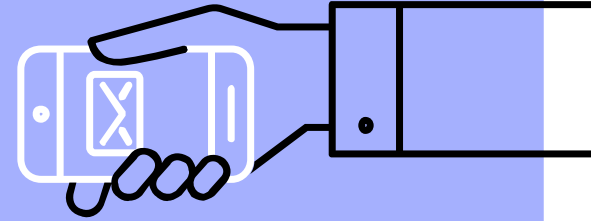
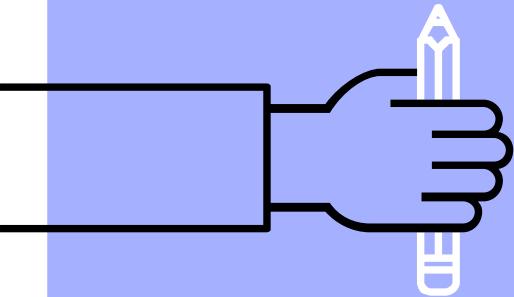
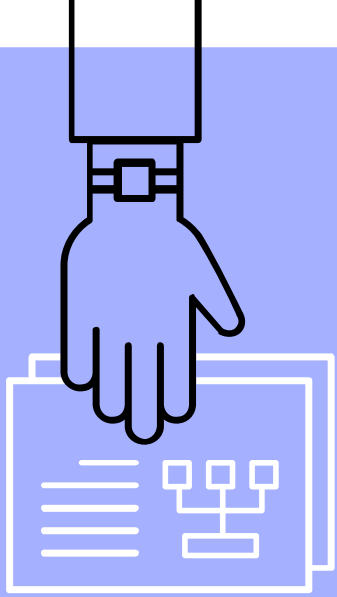


Welcome to Nastech 2.0 Ignite



How will this work?

Ignite Sessions

Four different topics will be shared with the group. Based on the topic that pertains the most to you, you can select which table to go to for our breakout sessions.

Breakout Session Tables

- ▶ Go where you want and move around when you want to.
- ▶ Lead the conversation, participate, or just listen.
- ▶ Check out the [session notes](#) afterward if you couldn't get to every table that you were interested in!

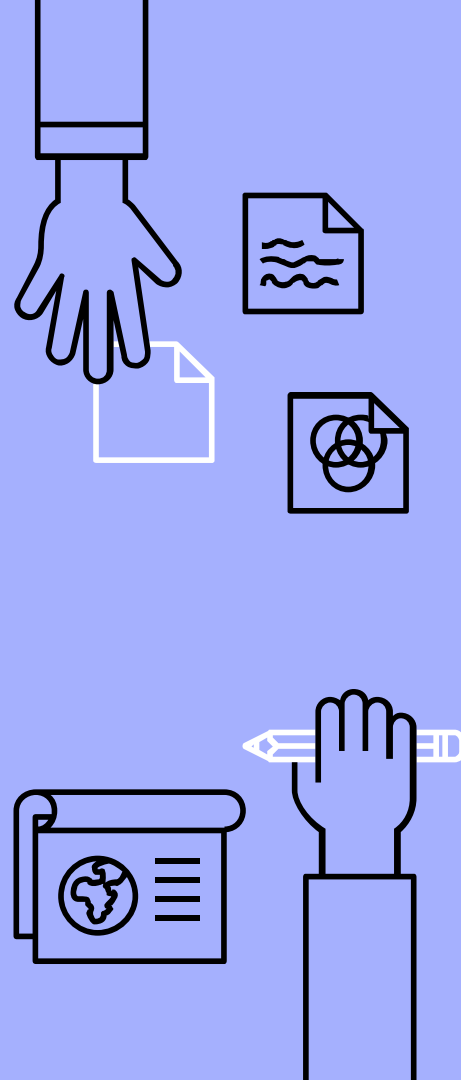


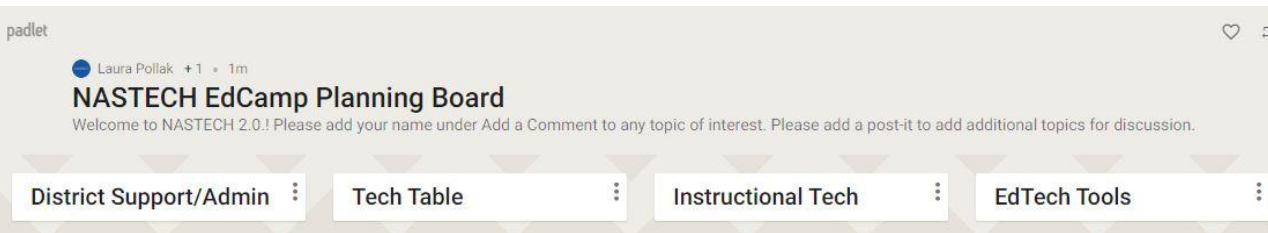
Table Topics

- ▷ District Support/Admin
- ▷ Technical
- ▷ Instructional Tech
- ▷ EdTech Tools



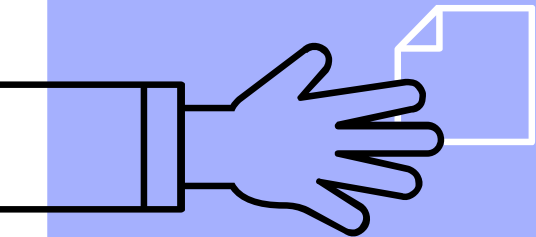
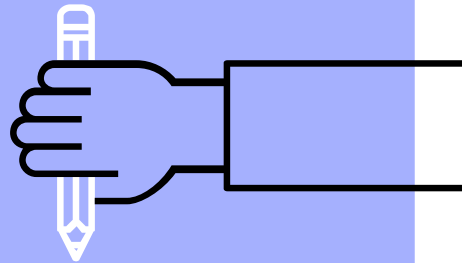
What is Padlet?

- ▶ Idea-generating board
- ▶ Will be used to share topics that you are willing to lead a table conversation on OR to request a topic for discussion



1. District Support/Admin

Preventing and Managing
Data Breaches



Protecting District Data

Preventing

- ▶ Data privacy and security service
- ▶ MS-ISAC
- ▶ 2-factor or multi-factor authentication for admin/IT
- ▶ Simulated phishing emails to staff ([KnowBe4](#))
- ▶ [Digital privacy and security training for staff](#)
- ▶ Change of practices (encrypted file transfer)
- ▶ Data loss prevention, Email Gateway ([Barracuda Essentials](#))
- ▶ Real-time spear phishing and cyber fraud defense (Barracuda Sentinel)

The screenshot displays two parts of the Barracuda security suite. The top part is the 'Barracuda Cloud Control' dashboard, which includes a search bar, navigation tabs for 'ESS', 'Overview', 'Domains', 'Inbound Settings', 'Outbound Settings', 'ATP Settings', 'Users', 'Reports', and 'Support'. Below these are sub-tabs for 'Sender IP Address Ranges', 'Tagline/Footer', 'DLP/Encryption', 'Content Policies', 'Abuse Monitor', and 'Notifications'. The 'Content Policies' tab is selected. The bottom part is the 'Barracuda Sentinel' interface, showing the 'PROTECTION STATUS FOR HEWLETT WOODMERE PUBLIC SCHOOLS'. It features two key metrics: '878 mailboxes protected' and '55 quarantined spear phishing attacks'.

Barracuda Cloud Control

Search

ESS Overview Domains Inbound Settings Outbound Settings ATP Settings Users Reports Support

Home > Sender IP Address Ranges Tagline/Footer DLP/Encryption Content Policies Abuse Monitor Notifications

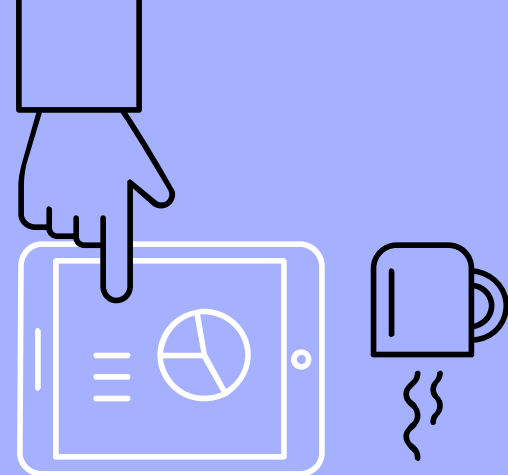
Backup > Content Policies ?

SEN Barracuda Sentinel

PROTECTION STATUS FOR HEWLETT WOODMERE PUBLIC SCHOOLS

878 mailboxes protected

55 quarantined spear phishing attacks



Managing a Data Breach

1. Change the user password
2. Kill all active sessions: [session token revocation](#)
3. Look for email rules that had been created (if email breach)
4. Check 365 logs (make sure to enable detailed audit logs in 365 for users who transmit sensitive information)
5. Utilize a syslog server (Kiwi by Solarwinds): collect, filter, alert, forward and store log messages OR if this is not in place, check logs of all systems that may have been compromised to determine the extent of the data (remote access, SIS, etc)
6. Review your District Breach Notification Policy
7. Notify the appropriate individuals (FERPA, 208 violations)

*Make your superintendent aware and consult with your legal team. In most instances, depending on the type of data compromised, you will need to report the incident to

- [New York State Office of Information Technology Services](#)
- New York State Attorney General's Office
- New York State Department of State, Division of Consumer Protection



When in doubt...

Louis Smith: GPEN, ACE, CCPA, CCO

Senior Security Analyst
Cyber Security Operations
NYS Cyber Command Center
Enterprise Information Security Office

NYS Office of Information Technology Services

CNSE ZEN Bldg., Room 205, 201 Fuller Road, Albany, NY 12203

Louis.Smith@its.ny.gov

Cyber Command Center Hotline: (518) 242-5045

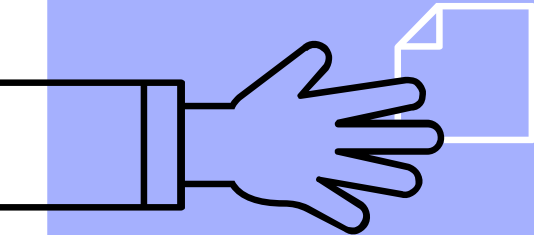
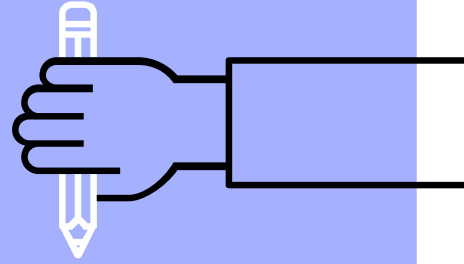
www.its.ny.gov

NYS CYCOM can assist in:

- Malware and log analysis
- Incident response assistance
- Business email compromise remediation efforts
- Digital forensics



2. Instructional Technology



GROWING SUSTAINABLE REDEFINITION: INTERNAL INNOVATION GRANTS INNOVATION

Janna Ostroff



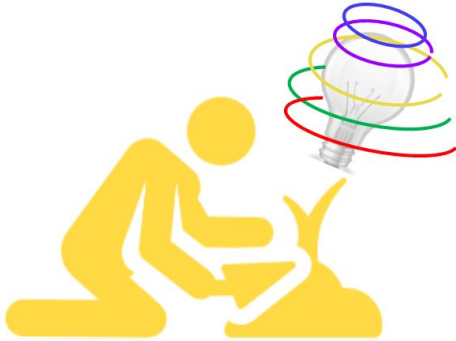
Oyster Bay-East Norwich Schools



jostroff@obenschools.org



@ObenTech



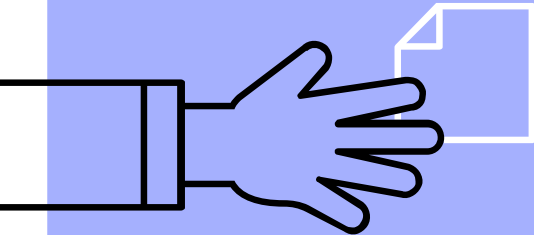
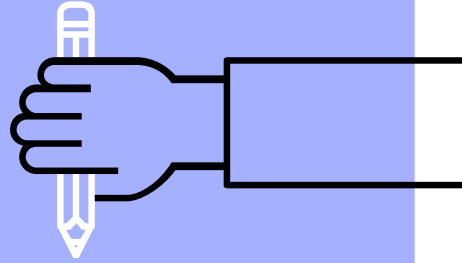
<https://www.obenschools.org/Page/1356>

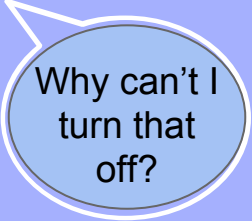


3. Tech Table

Going cloud-based with 365

Shouldn't it be easier and
less restrictive





Why can't I
turn that
off?

“

*No ability to force password reset
via email login*

*Many steps involved in creating
accounts, including having to
assign licenses.*

Inability to turn off some features.

*Less of a GUI interface – more
need for PowerShell.*



Office 365



```
VisualSVN Server PowerShell
Windows PowerShell
Copyright (c) 2015 Microsoft Corporation. All rights reserved.

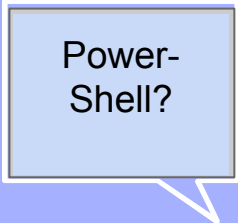
Welcome to VisualSVN Server PowerShell!

List of VisualSVN Server cmdlets: Get-Command -Module VisualSVN
Get help for a cmdlet: help <cmdlet-name> or <cmdlet-name> -?
Get online help for a cmdlet: help <cmdlet-name> -Online

PS C:\Repositories> Measure-SvnRepository

Name                               Revisions      Size      SizeOnDisk
----                               -
Department01                       32770          160,265 KB 242,348 KB
Department02                       8933          121,500 KB 139,238 KB
Department03                        476           1,038 KB   2,218 KB
Department04                       2582          10,659 KB  14,144 KB
Department05                      18838          32,571 KB  36,749 KB

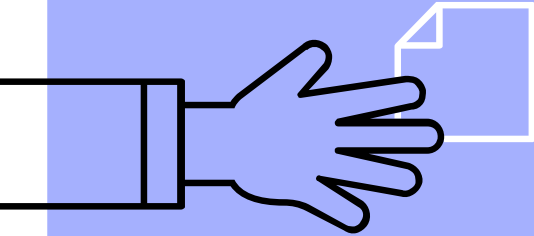
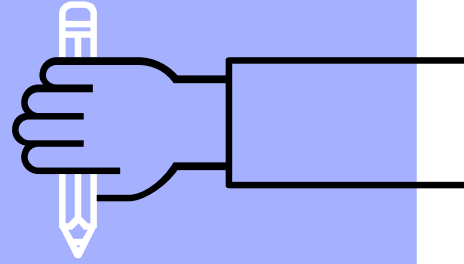
PS C:\Repositories>
```



Power-
Shell?

4. Ed Tech Tools

Suggested Topics
from Padlet





Engaging and Empowering Student Voice NASTECH 2018



@EastWillistonSD
@EWSDTech
#ewlearns

Ed Kemnitzer

Director of Technology,
Innovation, &
Information Services

East Williston UFSD



@kemnitzer3



Other Suggested Topics for Future Sessions

BYO Chromebook for Colleagues
Security Company/Tech Interface
One Roster Integration
Collaboration Tools
Digital Wellness
Social Media Monitoring Services

